

contents

5



Centrifugal Fans
Heavy Duty
Industrial Type

6



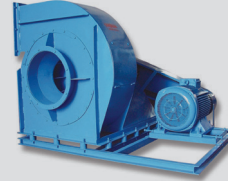
High Pressure
Centrifugal Fans

7



Centrifugal Fans
with Open &
Straight Impeller

8



Centrifugal Fans
with Straight Blade
Impeller

9



Centrifugal
Fans with
Z Profile Blade
Design

10



Centrifugal Fans –
Forward Curved &
Multiblade Impeller

11



Roof Fans

12



Axial Fans

13



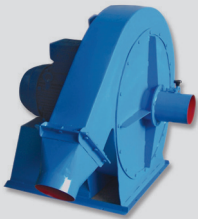
Centrifugal Fans
Cast Aluminium
Casing

14



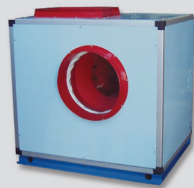
Centrifugal Fans
with Multiblade
Impeller – Cast
Casing

15



Ex-Proof
Fans

16



Ventilation
Units

17



Pneumatic Trim
Removal Fans

18



Cyclone Dust
Collector

19



Pulse Jet
Filters

21



Dust Collection
Filtration Systems

22



Dust Collection
Filtration Systems

23



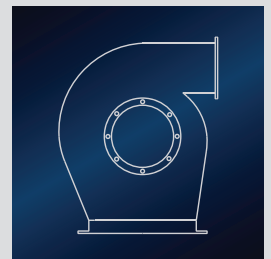
Industrial
Ventilation Systems

24



Pneumatic Handling
Conveying Systems

25



Fan Orientations &
Positions

About Us

Cerciller Industrial Fans & Ventilation Systems is a manufacturing company focusing on design, production and sales of industrial fans and ventilation systems.

It is a family-owned business and was established in 1975 by Mr. Senel Cercil as AsFan Co Ltd at that time. In 1994, the company changed the name for respecting the family name and become Cerciller Industrial Fans and Ventilation Systems.

Our founder, Mr. Senel Cercil, has been in fan production business since his childhood. He was 16 years old when he started his apprenticeship in a local factory in Kasimpasa province of the city of Istanbul in Turkey.

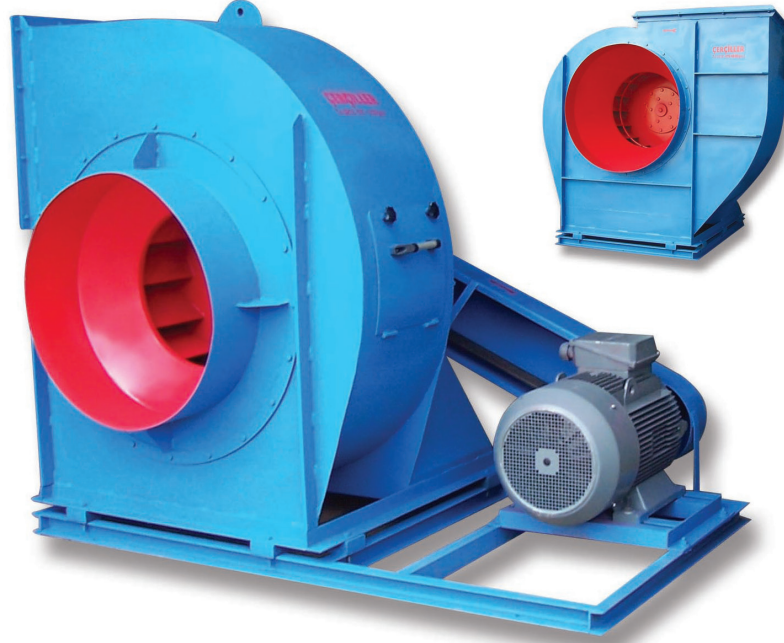
In 2005, Mr. Cuneyt Cercil, son of Mr. Senel Cercil, has joined the company after completing his bachelor degree in Mechanical Engineering. In 2007, he received his master degree in Mechanical Engineering from Istanbul Technical University, one of the most reputable high-tech university of Turkey. He is now General Manager of the company.

Cerciller is currently providing its services to their respectful customers from its new premises in Beylikduzu, Istanbul.

Cerciller's wide range product portfolio includes but not limited to different types of centrifugal fans, roof fans, axial fans, ex-proof fans, pneumatic trim removal fans, ventilation units, cyclone dust collectors, and pulse jet filters. Cerciller also provides engineering services about dust collection&filtrations, industrial ventilation systems and pneumatic handling conveying systems.

Centrifugal Fans Heavy Duty Industrial Type

Low or medium pressure, single inlet fan
with backward curved impeller



Specifications:

- ⚙ Flow rates: up to 600.000 m³/h
- ⚙ Pressure: up to 6.500 Pa
- ⚙ Belt drive, direct – drive, or coupling drive
- ⚙ Max temperature values:
-20 °C - +300 °C
- ⚙ Backward curved impeller with
high efficiency design
- ⚙ Sheet stell casing
- ⚙ IE2 high efficiency motors,
3 -phase, 400 V, 50 Hz
- ⚙ Energy efficiency: up to 84%
- ⚙ Low operating noise
- On request:**
- ⚙ IE3 premium efficiency motors
- ⚙ 60 Hz models
- ⚙ Special design fan up to 1.100 °C
for air transmission
- ⚙ Stainless steel or galvanized
coating casing

Fields of Applications:

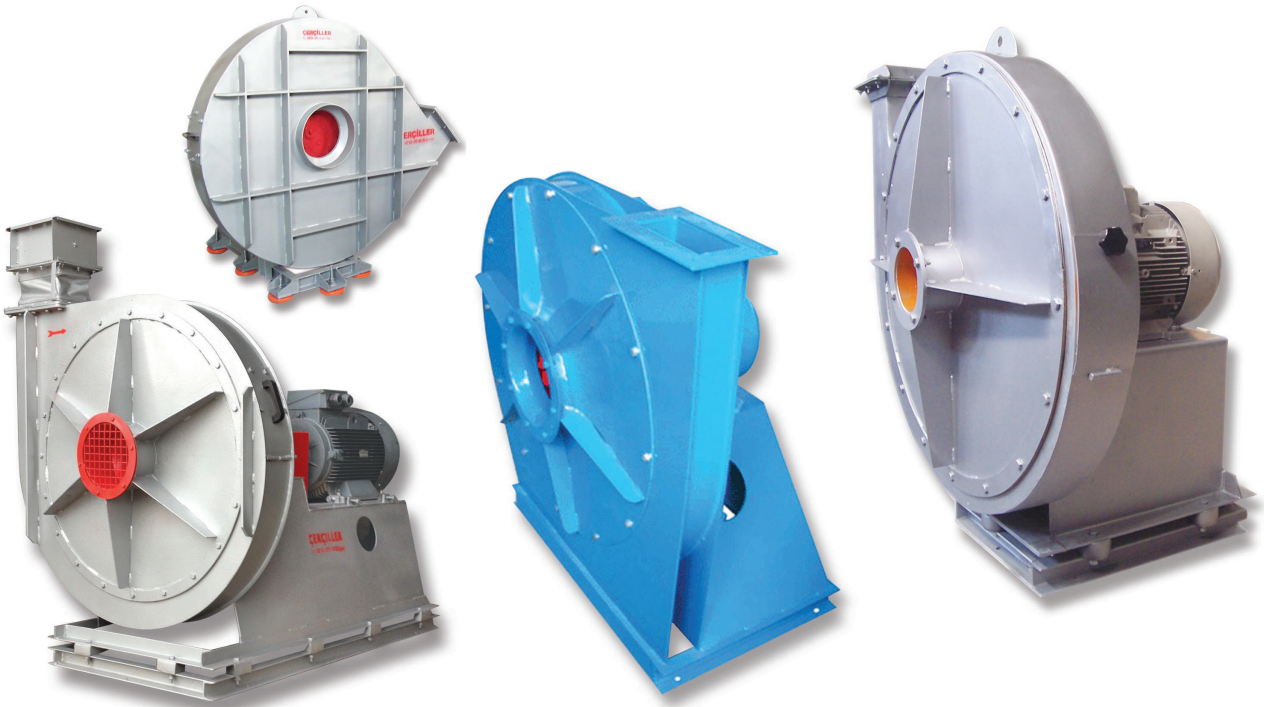
- ⚙ Suitable for working with clean or dusty air
- ⚙ All kinds of industrial applications
- ⚙ At dust collection and filtration systems
- ⚙ At waste gas and hot air circulations
- ⚙ At drying facilities

Industries used in:

- ⚙ Paint & Coating Industry,
- ⚙ Rubber Industry,
- ⚙ Plastics Industry,
- ⚙ Ceramic Industry,
- ⚙ Food Industry,
- ⚙ Textile Industry,
- ⚙ Boiler Manufacturing Industry,
- ⚙ Ship Construction Industry,
- ⚙ Cement Industry

High Pressure Centrifugal Fans

Single Inlet Fan with Backward curved or straight blade impeller



Specifications:

- ⚙ Flow rates: up to 50.000 m³/h
- ⚙ Pressure: up to 18.000 Pa
- ⚙ Belt drive, direct – drive, or coupling drive
- ⚙ Max temperature values:
-20 °C --- +300 °C
- ⚙ Backward curved or straight blade impeller
- ⚙ Reinforced construction design in compliance with high pressure
- ⚙ Sheet stell casing
- ⚙ IE2 high efficiency motors, 3 -phase, 400 V, 50 Hz

On request:

- ⚙ IE3 premium efficiency motors
- ⚙ 60 Hz models
- ⚙ Special design fan up to 900 °C for air transmission
- ⚙ Stainless steel or galvanized coating casing

Fields of Applications:

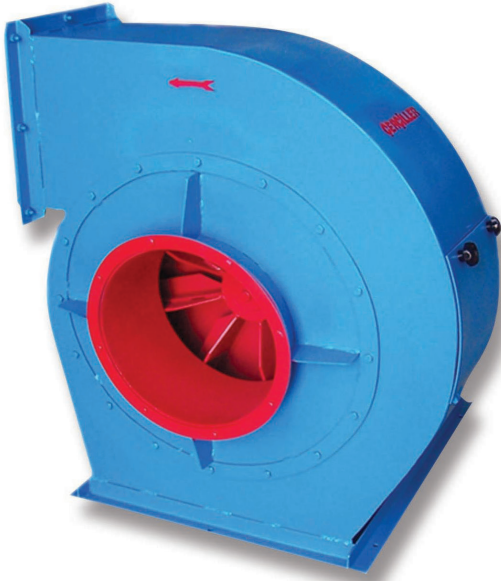
- ⚙ Supplying combustion air for boilers
- ⚙ At melting furnaces requiring high pressure
- ⚙ At ventilation operations of mine galleries
- ⚙ At material convey processes with the help of high pressure air
- ⚙ At burners requiring high pressure
- ⚙ At glass washing / drying machine

Industries used in:

- ⚙ Glass Manufacturing Industry,
- ⚙ Mining Industry,
- ⚙ Casting Industry,
- ⚙ Boiler Manufacturing Industry,
- ⚙ Steel Industry,

Centrifugal Fans with Open & Straight Impeller

Medium pressure, single inlet fan with open & straight blade impeller



Specifications:

- ⚙ Flow rates: up to 200.000 m³/h
- ⚙ Pressure: up to 7500 Pa
- ⚙ Belt drive, direct – drive, or coupling drive
- ⚙ Max temperature values:
-20 °C --- +300 °C
- ⚙ Open & straight blade impeller
- ⚙ Specifically designed for material convey processes with straight and open blade impeller structure
- ⚙ Good performance in conveying of material through the ventilator and causing no problem in the working conditions with air containing adhesive
- ⚙ Sheet stell casing
- ⚙ IE2 high efficiency motors,
3 -phase, 400 V, 50 Hz

On request:

- ⚙ IE3 premium efficiency motors
- ⚙ 60 Hz models

- ⚙ Special design fan up to 900 °C for air transmission
- ⚙ Hardox, stainless steel or galvanized coating casing

Fields of Applications:

- ⚙ Granular material conveying in factories
- ⚙ At dust collection and filtration systems

Industries used in:

- ⚙ Wood, MDF and Particle Board Industry,
- ⚙ Paint & Coating Industry,
- ⚙ Textile Industry,
- ⚙ Cement Industry,
- ⚙ Petrochemical Industry,
- ⚙ Plastic Industry,

Centrifugal Fans with Straight Blade Impeller

Medium pressure, single inlet fan with straight blade impeller



Specifications:

- ⚙ Flow rates: up to 200.000 m³/h
- ⚙ Pressure: up to 7.500 Pa
- ⚙ Belt drive, direct – drive, or coupling drive
- ⚙ Max temperature values:
-20 °C --- +300 °C
- ⚙ Straight blade impeller
- ⚙ Special design for providing good performance at the air containing dense dusty, chafing or granules.
- ⚙ Even under the most dusty working conditions, no balancing due to its negative unpressurized blade structure
- ⚙ Sheet stell casing
- ⚙ IE2 high efficiency motors, 3 -phase, 400 V, 50 Hz

On request:

- ⚙ IE3 premium efficiency motors
- ⚙ 60 Hz models
- ⚙ Special design fan up to 900 °C for air transmission

- ⚙ Hardox, stainless steel or galvanized coating casing

Fields of Applications:

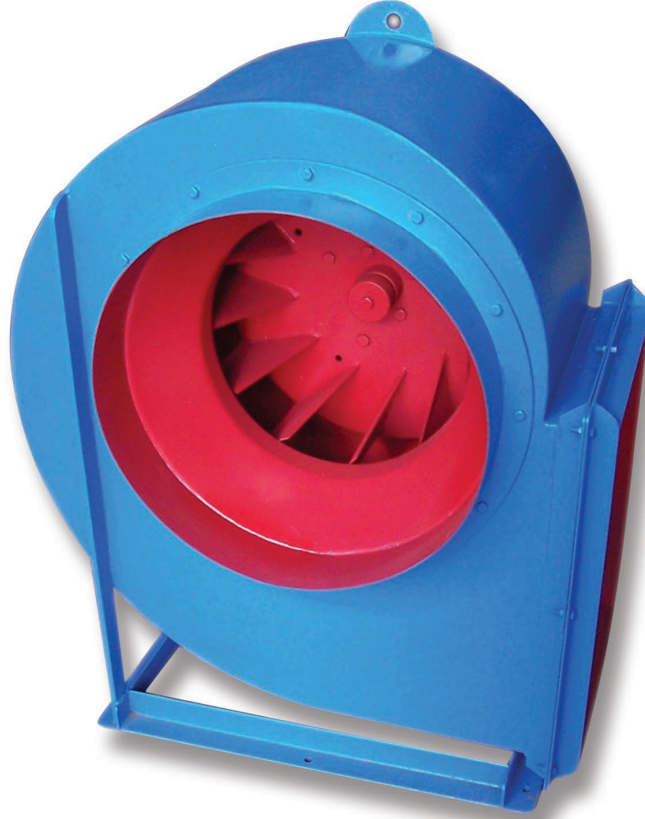
- ⚙ Granular material conveying in factories
- ⚙ At the systems working with dense dusty air containing with adhesive materials.

Industries used in:

- ⚙ Wood, MDF and Particle Board Industry,
- ⚙ Paint & Coating Industry,
- ⚙ Textile Industry,
- ⚙ Cement Industry,
- ⚙ Petrochemical Industry
- ⚙ Plastic Industry,

Centrifugal Fans with Z Profile Blade Design

Low pressure, single inlet fan with Z profile blade



Specifications:

- ⚙ Flow rates: up to 300.000 m³/h
- ⚙ Pressure: up to 1.500 Pa
- ⚙ Belt drive, direct – drive, or coupling drive
- ⚙ Max temperature values:
-20 °C --- +300 °C
- ⚙ Special Z profile blade design causes no balance problem and provides long working performance
- ⚙ Sheet stell casing
- ⚙ IE2 high efficiency motors,
3 -phase, 400 V, 50 Hz

On request:

- ⚙ IE3 premium efficiency motors
- ⚙ 60 Hz models
- ⚙ Special design fan up to 550 °C for air transmission
- ⚙ Stainless steel or galvanized coating casing

Fields of Applications:

- ⚙ Specifically designed for working without problems at the hard conditions of paintshops,
- ⚙ At spraying booths,
- ⚙ Used in the ventilation systems containing adhesive materials or sticky fume

Industries used in:

- ⚙ Carpentry / Woodworks
- ⚙ Paintshops

Centrifugal Fans – Forward Curved & Multiblade Impeller

Low pressure, single inlet fan with multiblade forward – curved impeller



Specifications:

- ⚙ Flow rates: up to 200.000 m³/h
- ⚙ Pressure: up to 1.500 Pa
- ⚙ Belt drive, direct – drive, or coupling drive
- ⚙ Max temperature values:
-20 °C --- +120 °C
- ⚙ Forward – curved impeller made of galvanized sheet steel
- ⚙ High flow rates capacity at medium pressures
- ⚙ Sheet stell casing
- ⚙ IE2 high efficiency motors,
3 -phase, 400 V, 50 Hz

On request:

- ⚙ IE3 premium efficiency motors
- ⚙ 60 Hz models
- ⚙ Stainless steel or galvanized coating casing

Fields of Applications:

- ⚙ Suitable for working with clean or moderately dusty air
- ⚙ used for the ventilation of industrial sites in factories
- ⚙ at Air Handling Units
- ⚙ in all kinds of comfort applications

Industries used in:

- ⚙ used generally in all kinds of industries

Roof Fans

Roof mounted, centrifugal fan with horizontal air outlet or axial extractor fan with vertical air outlet



Specifications:

- ⚙ Flow rates: up to 150.000 m³/h
- ⚙ Pressure: up to 600 Pa
- ⚙ Direct – drive
- ⚙ Max temperature values:
-20 °C --- +120 °C

⚙ Manufactured as 2 types:

- ⚙ Roof – mounted axial extractor
- ⚙ Roof – mounted centrifugal extractor

⚙ Roof – mounted axial extractor has

⚙ 3 types of impellers:

- ⚙ Cast aluminum impeller
- ⚙ Plastic impeller
- ⚙ Sheet steel impeller

⚙ Roof – mounted centrifugal extractor has one type of impeller:

- ⚙ Backward curved impeller made of sheet steel

- ⚙ Sheet steel casing
- ⚙ IE2 high efficiency motors,
3 -phase, 400 V, 50 Hz

On request:

- ⚙ IE3 premium efficiency motors
- ⚙ 60 Hz models
- ⚙ Stainless steel or galvanized coating casing
- ⚙ Special production resistance up to 250 °C

Fields of Applications:

- ⚙ used for the general ventilation of industrial sites in factories
- ⚙ used for ventilation provided by mounting on roof or chimney for air circulation
- ⚙ used for transferring the exhaust gas to the atmosphere via roof or chimney.
- ⚙ Underground car parks, bunkers, workshops etc..

Industries used in:

- ⚙ In all types of industries

Axial Fans



Specifications:

- ⚙ Flow rates: up to 150.000 m³/h
- ⚙ Pressure: up to 650 Pa
- ⚙ Belt drive, direct – drive
- ⚙ Max temperature values:
-20 °C --- +150 °C
- ⚙ **Axial fan has 3 types of impellers:**
 - ⚙ Cast aluminum impeller
 - ⚙ Plastic impeller
 - ⚙ Sheet steel impeller
- ⚙ Sheet steel casing
- ⚙ IE2 high efficiency motors,
3 -phase, 400 V, 50 Hz

On request:

- ⚙ IE3 premium efficiency motors
- ⚙ 60 Hz models
- ⚙ Stainless steel or galvanized
coating casing
- ⚙ Special production resistance up to 200 °C

Fields of Applications:

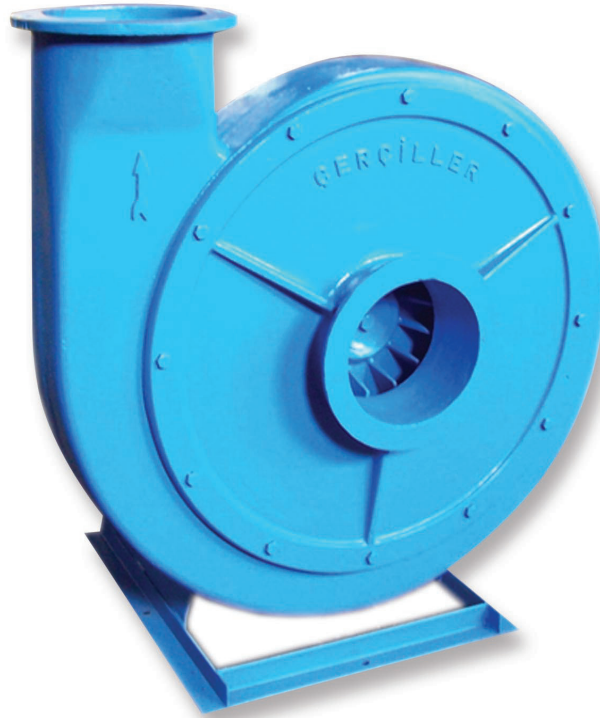
- ⚙ All kinds of industrial applications
- ⚙ In tunnels, underground car parks, bunkers,
workshops etc..
- ⚙ At drying facilities
- ⚙ At ventilations of vessel's warehouse
- ⚙ At water cooling towers

Industries used in:

- ⚙ Poultry Farming
- ⚙ Maritime Transport Industry
- ⚙ In all types of industries

Centrifugal Fans Cast Aluminium Casing

Medium or high pressure, single inlet fan with cast aluminium casing and impeller



Specifications:

- ⚙ Flow rates: up to 9.000 m³/h
- ⚙ Pressure: up to 5.000 Pa
- ⚙ Belt drive, direct – drive, or coupling drive
- ⚙ Max temperature values:
-20 °C --- +120 °C
- ⚙ Cast aluminium casing and impeller
- ⚙ Special design in blade structure to minimize operating noise
- ⚙ Easy operational structure for mounting / dismantling
- ⚙ Strengthen and straight blade structure - enabling the resistance to the possible damage of granular materials passing through fan
- ⚙ IE2 high efficiency motors, 3 -phase, 400 V, 50 Hz

On request:

- ⚙ IE3 premium efficiency motors
- ⚙ 60 Hz models
- ⚙ Special production resistance up to 250 °C

Fields of Applications:

- ⚙ At granular material convey processes at plastic industry
- ⚙ At plastic blowmoulding machines

Industries used in:

- ⚙ Plastic Industry
- ⚙ Packaging Industry

Centrifugal Fans with Multiblade Impeller – Cast Casing



Specifications:

- ⚙ Flow rates: up to 10.000 m³/h
- ⚙ Pressure: up to 2.500 Pa
- ⚙ Direct – drive
- ⚙ Max temperature values:
-20 °C --- +120 °C
- ⚙ Cast aluminium casing
- ⚙ Forward – curved multiblade impeller made of galvanized sheet steel
- ⚙ Enabling the control of flow rates with Iris Valve on suction nozzle
- ⚙ IE2 high efficiency motors,
3 -phase, 400 V, 50 Hz

On request:

- ⚙ IE3 premium efficiency motors
- ⚙ 60 Hz models

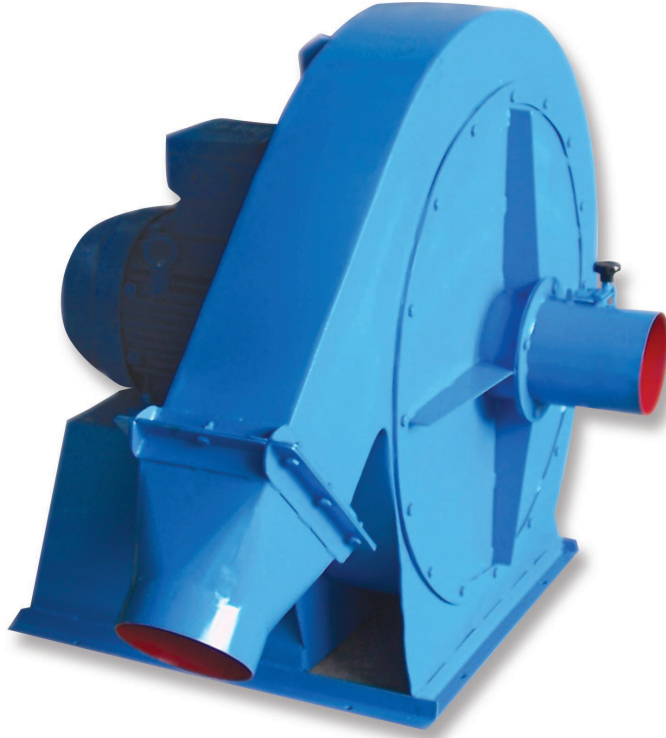
Fields of Applications:

- ⚙ Supplying combustion air for heating boilers
- ⚙ At the applications required low flow rates at medium pressures

Industries used in:

- ⚙ Boiler Manufacturing Industry

Ex-Proof Fans



Specifications:

- ⚙ Flow rates: up to 100.000 m³/h
- ⚙ Pressure: up to 6.000 Pa
- ⚙ Belt drive, direct – drive, or coupling drive
- ⚙ Max temperature values:
-20 °C --- +100 °C
- ⚙ Exproof type of motor
- ⚙ Used safely in the industries working with flammable and explosive chemicals and gases.
- ⚙ Interior body covered with aluminium plates in order to avoid sparks occurred due to possible piece breakage of the blades
- ⚙ Ex d (e) II C T4 class motors,
3 -phase, 400 V, 50 Hz

Fields of Applications:

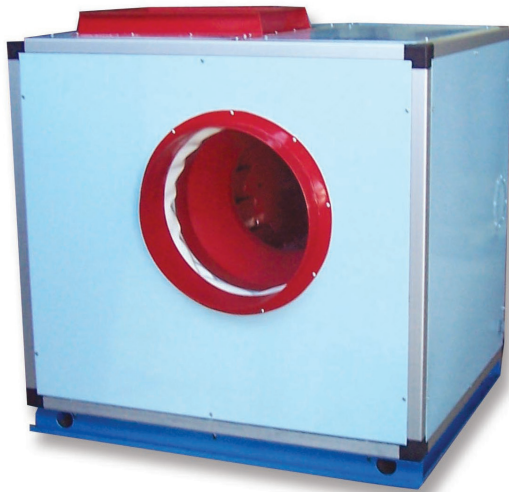
- ⚙ All kinds of industrial applications that include risk of fire and explosion

Industries used in:

- ⚙ Paint & Coating Industry
- ⚙ Petro-chemical Industry
- ⚙ Chemical Industry
- ⚙ Rubber & Tire Industry

Ventilation Units

Acoustically and termally insulated,
single or double inlet fans



Specifications:

- ⚙ Flow rates: up to 400.000 m³/h
- ⚙ Pressure: up to 5.000 Pa
- ⚙ Belt drive
- ⚙ Max temperature values:
-20 °C --- +60 °C
- ⚙ Forward – curved impeller
- ⚙ Galvanized sheet steel structure
- ⚙ Superior sound insulation owing to special design insulation plates used between the internal walls
- ⚙ Electrostatic painted outer body structure
- ⚙ Anti-vibration mount in the unit
- ⚙ IE2 high efficiency motors,
3 -phase, 400 V, 50 Hz

On request:

- ⚙ Single or double internal wall manufacturing upon request
- ⚙ IE3 premium efficiency motors
- ⚙ 60 Hz models
- ⚙ with air filters EU3 or EU5

Fields of Applications:

- ⚙ Used in the facilities where very low operating noise is required
- ⚙ Used in the areas where the fans are under direct effect of dust, humidity, rain, etc...

Industries used in:

- ⚙ In all types of industries

Pneumatic Trim Removal Fans



Specifications:

- ⚙ Connection power between 2,2 kW and 55 kW
- ⚙ Belt drive or direct – drive
- ⚙ Low operating noise owing to inlet and outlet silencers
- ⚙ Energy efficient design, productivity up to 84%
- ⚙ High efficient venturi design that increases vacuum power
- ⚙ Special design that prevents problems such as blockings, paper or plastic congestions etc...

Fields of Applications:

- ⚙ At the process of pneumatic trim removals
- ⚙ Pneumatic Handling Conveying Systems

Industries used in:

- ⚙ Packaging Industry
- ⚙ Plastic Industry
- ⚙ Food Industry
- ⚙ Paper Industry

Cyclone Dust Collector



Specifications:

- High efficiency at filtration needs
- Superior filtration capacity owing to its special design based on the parameters of particle size and density
- Can be manufactured in different thickness with St 37 / 42 quality material or Cr – Ni stainless quality material in accordance with particle's corrosive effects
- Providing proper dust discharge with its air-lock equipment by preventing reverse air flow

On request:

- Can be manufactured from AISI 304 / 309 / 316 stainless sheet material as per request
- Rotary valve for reverse airflow blocking

Fields of Applications:

- At collection and filtration of all kinds of dust

Industries used in:

- In all types of industries

Pulse Jet Filters



Specifications:

- Cyclonic body design and increased filtration efficiency
- Pulse jet filter and cyclonic body design together provide double-effect filtering system
- Larger volume of air can be filtered with more compact filters with this system thanks to increased efficiency
- Can be manufactured in different thickness with St 37 / 42 quality material or Cr – Ni stainless quality material in accordance with particle's corrosive effects

Fields of Applications:

- At collection and filtration of all kinds of dust

Industries used in:

- In all types of industries

PROJECTS AND SOLUTIONS

Dust Collection & Filtration Systems
Industrial Ventilation Systems
Pneumatic Handling Conveying Systems

Dust Collection Filtration Systems



Dust Collection Filtration Systems



In most of the factories, the dust becomes one of the unwanted outcomes of production processes.

With our dust collection and filtration systems, the dust in the manufacturing areas is collected from its source with local aspiration system without sprading it to working environment and is filtered with the suitable filters and discharged to the

atmosphere.

Our systems include below specifications:

- ⚙ Special design negative unpressurized blade structure
- ⚙ Prevent balancing

Industries used in:

- ⚙ In all types of industries

Industrial Ventilation Systems



In this system, the main objective is to collect and send out to atmosphere the contaminants, such as unpleasant odor, moisture, steam, exhaust gas etc... which occur during production at the manufacturing facilities and reduce indoor air quality.

If the required ventilation system installation is not carried out, the comfort of the work area decreases at a noticeable rate due to the deterioration of the indoor air quality, and as a result, the working efficiency drops and human health is put at risk.

Thanks to our experience and technical knowledge established by the years, we provide the most economical and effective solutions for industrial enterprises by offering the most advanced ventilation systems based on their different requirements.

Industries used in:

🌀 In all types of industries

Pneumatic Handling Conveying Systems



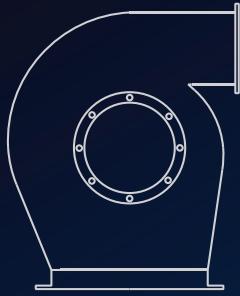
It is the process of transferring the materials with high pressure air or aspiration from one point to the other without any human touch.

Industries used in:

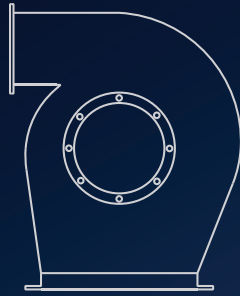
- ⚙ Food Industry
- ⚙ Milling & Flour Industry
- ⚙ Chemical Industry
- ⚙ Plastic Industry
- ⚙ Packaging Industry
- ⚙ Paper Industry



Fan Orientations & Positions



1



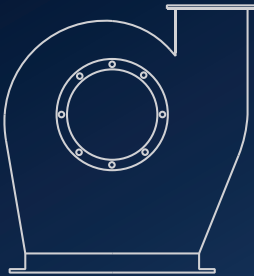
2



3



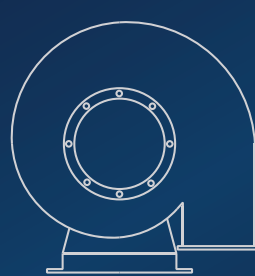
4



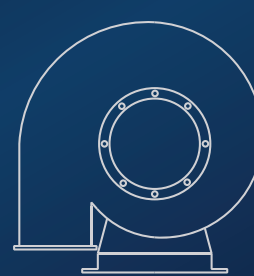
5



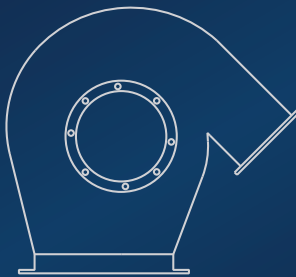
6



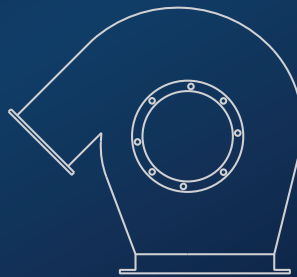
7



8



9



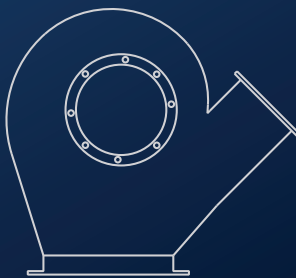
10



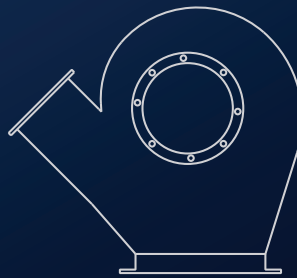
11



12



13



14



15



16

Some of Our References

Packaging Production Factory



<http://rotopak.com/about/>

Automotive Manufacturing Factory



<https://www.fordotosan.com.tr/en>

LPG Factory



<https://www.aygaz.com.tr/en/corporate/area-of-operations>

Glassware Production Factory



<http://www.pasabahce.com/en/about-us/brands/pasabahce>

Confectionery & Gum Production Company



<http://www.perfettivanmelle.com.tr/AboutUs>

Confectionery Production Company



<https://www.ulker.com.tr/en#>

Ceramic Production Factory



<https://vitraglobal.com/about-us>

Turkish Aerospace Industries



<https://www.tai.com.tr/en/>



Reference No/Referans Nu.: OSE – 12-0506/01



SZUTEST TECHNICAL INSPECTION and CERTIFICATION

Rely on Experience

ATTESTATION OF COMPLIANCE UYGUNLUK ONAYI

The technical file and test reports of the following product have been checked and found in compliance with the Parliament and Council Directive 2006/95/EC of 12 December 2006 on the harmonization of the laws of Member States relating to electrical equipment designed for use within certain voltage limits and Council Directive 2006/42/EC of 17 May 2006 on the approximation of the laws of the Member States relating to machinery.

Teknik dosya ve test raporları incelenerek, belirtilen ürünün Avrupa Birliği Teknik Komisyonu tarafından 12 Aralık 2006 tarihinde yayınlanan 2006/95/AT Belirli Gerilim Sınırları Dahilinde Çalışmak Üzere Tasarlanmış Teçhizat ile ilgili yönetmeliği ve 17 Mayıs 2006 tarihinde yayınlanan 2006/42/AT Makina Emniyeti Yönetmeliğine uygunluğu saptanmıştır.

Applicant: ÇERÇİLLER Mak. San. Ve Tic. Ltd. Şti.
Başvuru Sahibi: Birlik San. Sit. 3. Cadde No.133 Beylikdüzü, İstanbul, Türkiye

Manufacturer: ÇERÇİLLER Mak. San. Ve Tic. Ltd. Şti.
Üretici: Birlik San. Sit. 3. Cadde No.133 Beylikdüzü, İstanbul, Türkiye

Product: Industrial Fans
Ürün: Endüstriyel Fanlar

Type/Model: Radial and Axial Fans
Tip/Model: Radyal ve Aksiyel Fanlar

Base of attestation: File of technical documentation,
Onay Dayanağı: Test and final report No. 12-0506/01

*The referred technical file(s) shows that the product complies with standard(s) recognized as giving presumption of compliance with the essential requirements listed EU Directive(s) above. Other relevant Directives have to be observed. This attestation does not abrogate the compulsory obligation of the manufacturer to issue the declaration of conformity.

**Diğer ilgili direktiflere uyulmalıdır. Bu onay üreticinin uygunluk beyanı düzenleme zorunluluğunu ortadan kaldırmaz. Referans teknik dosya ile ürünün yukarıda belirtilen AT Direktiflerinin temel gereklerine uygunluğu kabul edilir.*

İstanbul, Date/Tarih 2012-05-11

SZUTEST
TEKNİK KONTROL VE
BELGELENDİRME
HİZM. TİC. LTD. ŞTİ.

İnönü Mah. Kayışdağı Cad.No: 148 Kat 3-4
ATAŞEHİR - İSTANBUL / TÜRKİYE
Tel: +90 216 469 46 66 Fax: +90 216 469 46 67
web: szutest.com.tr e-mail: info@szutest.com.tr



Mehmet Işıklar
General Manager





CERCİLLER

Birlik Sanayi Sitesi, 3. Cadde, No:133,
Beylikduzu, İstanbul – Turkey

T: +90 212 909 59 40
F: +90 212 876 49 40
E: info@cerciller.com
W: www.cerciller.com